



# AutoMAX - 200

Fully Automated Chemistry Analyzer

**Cost-effective**

**Very convenient to use**

**200 Tests/Hour. Double Reagent**

**Gives reliable and accurate results for a wide menu of assays**

# AutoMAX - 200

## Fully Automated Chemistry Analyzer



### KEY FEATURES

- Best in class Technology
- Compact and user-friendly
- Independent probe & stirrer
- Constant throughput of 200 tests/hour with double reagents
- Minimum Reaction Volume as low as 150 L, saves cost
- 80 Reagent and 40 Sample Positions with In-built
- The reaction tray contains 44 UV Plastic reaction cuvettes
- Multi wavelengths simultaneous detection
- Maintenance Free semiconductor solid state refrigeration
- Non-stop cooling system with peltier pad inside
- Horizontal moving sampling and mixing arm, better efficiency
- Multi-stage On-board laundry system
- Low water consumption



# AutoMAX - 200

## Fully Automated Chemistry Analyzer



### Multifunctional precision sampling probe

- External & internal mirror polish, external & internal probe washing
- Dedicated sampling probe equipped with sensitive liquid sensor, timely feedback of reagent & sample residuals
- Collision protection, automatic probe depth adjusting



### Excellent mixer design

- Teflon coating mixer. No water dropping (reducing carry-over)
- Excellent mixing effect with standard mixing procedure



### High precision ceramic syringe

- Permanent ceramic piston
- Accurate dispensing as low as 0.1  $\mu\text{l}$



### Reagent tray & Sample tray

- 80 reagent positions, 40 sample positions
- Non-stop cooling system with peltier pad inside, 24 hours 2°C-14°C
- Bar code reader(optional)



### Reaction tray

- 44 reaction cuvettes
- Reaction volume as low as 150 $\mu\text{l}$
- Stable & accurate temperature (37 $\pm$ 0.1°C) for reaction

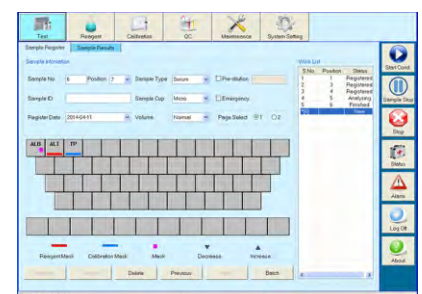


### Advanced operating system

- User friendly software interface simple, easy-to-operation
- Sample automatic dilution (decrease, increase, normal)
- Reaction result automatic checking and warning, calibration result automatic checking, warning alarm log
- Linear & nonlinear calibration, Multi-points calibration up to 8 points
- Quality control apply to westgard, L-T plot, cumulative

### Optical system

- Integrated and fully closed with 8 wavelengths
- Absorbance range - upto 4 Abs.



# AutoMAX - 200

## Fully Automated Chemistry Analyzer

### Technical Specifications

#### General information

Machine type	Random access, open reagent & locked reagent (optional)
Test speed	Constant 200 tests/hour (Mono reagent or double reagent)
Test principle	Colorimetric method, turbidimetry Test method 1 point end, 2 point end, Fixed-Time, Kinetics
Calibration type	Linear & nonlinear

#### Sample unit

Sample tray	40 sample positions
Sample tube	Micro cup, test tube & blood collection tube can be used. (012 -13 )mm x (25 – 100 )mm
Sample volume	2-30µl, step by 0.1µl
Sample probe	Liquid surface detection, timely tracking for liquid volume. Collision avoidance
Sample barcode	Sample barcode reader (optional)

#### Reagent unit

Reagent tray	80 reagent positions (40 for R1 & 40 for R2), Non-stop cooling system with peltier pad inside, 24 hours 2°C-14°C, open system, could accept any reagent.
Reagent volume	20-300µl, step by 1µl
Reagent needle	Liquid surface detection, timely tracking for liquid volume. Collision avoidance.
Reagent barcode	Reagent barcode reader (optional)

#### Reaction unit

Reaction Tray	44 reaction cuvettes, new amorphous optical plastics reaction cups, perfect transmittance.
Reaction Volume	150µl-330µl
Reaction Time	10 minutes
Temperature	Peltier pad incubation system, reaction temperature (37°C + 0.1 °C)

#### Washing Unit

Onboard Laundry	Multi-stage on board laundry system, automatic cleaning and drying of cuvettes
-----------------	--------------------------------------------------------------------------------

#### Mixing system

Mixer	paddle-type mixing, effective reducing of carry-over
-------	------------------------------------------------------

#### Optical system

Light source	Halogen lamp
Wavelength	340nm; 405nm; 450nm; 505nm; 546nm; 578nm; 630nm; 700nm (4 more options)
Absorbance range	0-4.0 Abs
Resolution	0.0001 Abs

#### Operating system

Operating system	Windows XP, Windows 7, Windows 8, Windows 10
Data processing	Automatic calibration, test combination, effective time management of reagents, serum index, whole process detection, linear expansion of enzyme, blank deduction, dirty cuvette memory, cross infection prevention, patient information memory and association input, automatic report audit, data fuzzy query, report statistics and printing, reference range grading, alarm information classification, user operation privilege classification management.
Report printing	6 formats optional, support custom pattern
Interface	TCP/IP network interface

#### Working conditions

Power supply	AC 110/220V ± 10%, 50/60 Hz, 650W
Water consumption	8 L/hour (maximum)
Dimension	745mm x 540mm x 530mm(L*W*H)
Weight	45.4 Kg



**Healthcare Pvt. Ltd.**

Transforming Research into Innovations

Plot : # 338, Sector-2, Industrial Growth Centre, Saha (Haryana) India-133104.

E-mail : sales@aveconhealthcare.com, exportzone@aveconhealthcare.com

Website : www.aveconhealthcare.com

CIN NO : U24230HP2006PTC030275