

RX IMOLA

A FULLY AUTOMATED CLINICAL CHEMISTRY ANALYSER,
WITH A COMBINED THROUGHOUT OF 560 TESTS PER HOUR



RANDOX

» THE RX IMOLA DEMONSTRATES HIGH QUALITY
TESTING FOR RESULTS YOU CAN TRUST





01 BENEFITS

04 SYSTEM OVERVIEW

05 TEST MENU

10 SOFTWARE

11 FEATURES AT A GLANCE

12 ORDERING INFORMATION

13 SPECIFICATIONS

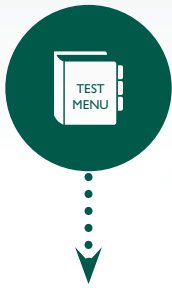
15 THE RX SERIES

17 RANDOX - A GLOBAL DIAGNOSTIC
SOLUTIONS PROVIDER

18 CONTACT US

» BENEFITS

The RX imola is a fully automated system with random access and STAT sampling functionality, boosting productivity and saving time. The RX imola is a cost effective system that delivers consistent high quality results. Capable of handling the workload of a medium to high throughput laboratory the RX imola provides rapid, comprehensive testing on a small footprint benchtop analyser.



TEST MENU & CONSOLIDATION

Expand your testing capabilities on one efficient platform

Extensive dedicated test menu, including; **routine chemistries, lipids, antioxidants, cardiac and diabetes** testing allows laboratories to expand their testing capabilities reducing additional costs of sending samples to be tested externally.

A large number of chemistry tests can be carried out on one platform providing **consolidation** opportunities and **real cost savings opportunities**.



ACCURATE RESULTS

Achieve accurate patient results first time, every time

Dual reagent probes minimise carry over **increasing accuracy**.

Serum indices check the integrity of patient samples, **flagging** if samples are deemed icteric, haemolytic or lipaemic.



UNRIVALLED PERFORMANCE

Reliability ensures no interruption to workflow

90 cuvettes on board **with cuvette check function** ensuring only clean and viable reaction vessels are used.

Five speed mixing arms eliminate foaming and ensure adequate mixing of latex enhanced immunoturbidimetric assays.

Continuous STAT loading hatch allows emergency samples to be analysed quickly and easily at any time.



QUALITY CONTROL

Developed to improve efficiency in your laboratory

6 different calibration options available **increases confidence** that the optimum algorithm is being used to achieve the most accurate results.

User can view QC history.

Automatically generates Levey-Jennings Charts, running mean values and QC statistics.

Up to 10 user defined multipoint rules.



FLEXIBILITY & VERSATILITY

Enhanced functionality maximises testing capabilities

12 wavelengths generated via diffraction grating (340-800nm) ensuring a multitude of chemistries are possible on one system.

RX imola is capable of running monochromatic, bi-chromatic, endpoint, kinetic, ISE, sample blanking and reagent blanking assays.

Cooled reagent carousel with 60 positions. Meaning **reagents can be stored on board without compromising stability**



COST SAVINGS

Smart technology designed to avoid additional costs

Minimal maintenance required, just 2 preventative maintenance services per year means **less down time**.

Intuitive **user friendly software** ensures that minimal training is required.

Economic platform with **low water consumption** of only 18L per hour.



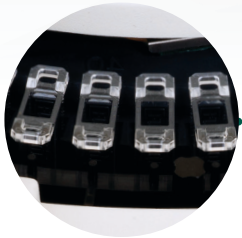
imola
ix

» SYSTEM OVERVIEW



REAGENT CAROUSEL

60 reagent positions for 20ml, 50ml and 100ml bottles, all cooled between 8-15°C. Smart reagent inventory management system with automatic barcode functionality ensures instant recognition of reagents. Dedicated reagents available from Randox.



CUVETTES

90 reusable Pyrex® cuvettes with a 5 year lifespan. On-board cuvette checking function ensures only clean and viable reaction vessels are used. Cuvettes have a curved inner surface to aid efficient cleaning and drying.



WASH STATION

An 8 stage washing process with acid, alkali and pure water wash steps ensures cuvettes are thoroughly cleaned before each test. Liquid level sensors at stations 1-5 prevent cuvette overflows.



SAMPLE CAROUSEL

The emergency loading port allows for runs to be interrupted for the processing of STAT samples. 72 positions are contained within the universal carousel, 20 positions available for calibrators and controls. Barcode sample identification ensures accurate matching of patient identification to specimen.



DUAL STIRRERS

Dual 5 speed rotating stirrers rinsed with purified water. The stirring system has a paddle type rotating stirrer with purified water.

» THE RX SERIES TEST MENU



CLINICAL

AUTOIMMUNE:

Complement Component 3
Complement Component 4
CRP
CRP Full Range (0.3-160mg/l)
CRP High Sensitivity
IgA
IgE
IgG
IgM
Rheumatoid Factor

BASIC METABOLIC PROFILE:

Calcium
CO₂ Total
Chloride
Creatinine
Glucose
Potassium
Sodium
Urea

BONE PROFILE:

Alkaline Phosphatase
Calcium
Phosphorus
Total Protein

CARDIAC:

Cholesterol
CK-MB
CK-NAC
CRP
CRP Full Range (0.3-160mg/l)
CRP High Sensitivity
Digoxin
Direct HDL Cholesterol
Direct LDL Cholesterol
HDL3
H-FABP
Homocysteine
Lipoprotein (a)
Myoglobin
sLDL
Triglycerides
TxB Cardio

COMPREHENSIVE METABOLIC PROFILE:
Albumin
Alkaline Phosphatase
ALT

AST (GOT)

Direct Bilirubin
Calcium
Chloride
CO₂ Total
Creatinine
Glucose
Lactate
Potassium
Sodium
Total Bilirubin
Total Protein
Urea

DIABETES:

Adiponectin
Cholesterol
Creatinine
Cystatin C
Direct HDL Cholesterol
Direct LDL Cholesterol
Fructosamine
Glucose
Glycerol
HbA1c/Hb
Microalbumin
NEFA (Non-Esterified Fatty Acids)
Ranbut (Hydroxybutyrate)
Total Protein
Triglycerides
Urinary Protein

ELECTROLYTES:

Calcium
Chloride (Nondirect)
CO₂ Total
Lithium
Magnesium
Potassium (Nondirect)
Sodium (Nondirect)

HAEMOLYTIC ANAEMIA:

G6P-DH
Haptoglobin
LDH

HEPATIC FUNCTION:

Albumin
Aldolase
Alkaline Phosphatase
Alpha-1 Antitrypsin
ALT

Ammonia

AST (GOT)
Bile Acids
Cholinesterase
Complement Component 3
Complement Component 4
Direct Bilirubin
Gamma GT
GLDH
Glycerol
Haptoglobin
IgA
IgG
IgM
Iron (UIBC)
LAP
LDH
Total Bilirubin
Total Protein
Transferrin
Transthyretin (Prealbumin)

INFLAMMATION AND INFECTION:

Alpha-1 Acid Glycoprotein
ASO
CRP
Lactate
Rheumatoid Factor

LIPIDS:

Apolipoprotein A-I
Apolipoprotein AII
Apolipoprotein B
Apolipoprotein CII
Apolipoprotein CIII
Apolipoprotein E
Cholesterol
Direct HDL Cholesterol
Direct LDL Cholesterol
HDL3
Lipoprotein (a)
sLDL
Triglycerides

NEONATAL SCREENING:

Alpha-1 Antitrypsin
CRP
CRP Full Range (0.3-160mg/l)
CRP High Sensitivity
IgE
Transthyretin (Prealbumin)

NEUROLOGICAL DISORDERS (CSF):

IgA
IgG
IgM

NUTRITIONAL STATUS:

Albumin
Copper
Ferritin
Iron
Iron (UIBC)
Lipase
Magnesium
Potassium
TIBC
Transferrin
Transthyretin (Prealbumin)
Zinc

PANCREATIC FUNCTION:

Amylase
Glucose
LDH
Lipase
Pancreatic Amylase

RENAL FUNCTION:

Albumin
Ammonia
Beta-2 Microglobulin
Calcium
Chloride
Creatinine
Cystatin C
Glucose
HbA1c/Hb
IgG
LDH
Magnesium
Microalbumin
Potassium
Sodium
Phosphorus (Inorganic)
Urinary Protein
Urea
Uric Acid



VETERINARY

Albumin	Cholesterol	Glucose	Potassium
Alkaline phosphatase	Cholinesterase (Butyryl)	Glycerol	Ranbut (Hydroxybutyrate)
ALT (GPT)	CK-NAC	HDL	Ransel (Glutathione peroxidase)
Aldolase	CO2 Total	Iron (UIBC)	Ransod (Superoxide dismutase)
Ammonia	Copper	Lactate	Sodium
Amylase	Creatinine	Lactate dehydrogenase	Total Protein
AST (GOT)	Canine CRP	LDL	Triglycerides
Bile acids	CRP	Lipase	Urea
Bilirubin	Fructosamine	Magnesium	Uric Acid
Calcium	Gamma-GT	NEFA (Non-esterified fatty acids)	Urinary protein
Chloride	GLDH	Phosphorus (Inorganic)	Zinc



TOXICOLOGY

THERAPEUTIC DRUGS:	Phenobarbitol	DRUGS OF ABUSE:	Ecstasy
Acetaminophen	Phenytoin	Amphetamines	EDDP
Carbamazepine	Salicylate	Barbiturates	Ethanol
Digoxin	Theophylline	Benzodiazepines	Methadone
Gentamicin	Valproic Acid	Cannabinoids	Opiates
Lithium		Cocaine metabolite	



PROTEINS

SPECIFIC PROTEINS:	Apolipoprotein E	CRP High Sensitivity	IgG
Alpha-1 Antitrypsin	ASO	Cystatin C	IgM
Alpha-1 Acid Glycoprotein	Beta-2 Microglobulin	Ferritin	Lipoprotein (a)
Apolipoprotein A-1	Ceruloplasmin	Fructosamine	Microalbumin
Apolipoprotein AII	Complement Component 3	Haptoglobin	Myoglobin
Apolipoprotein B	Complement Component 4	HbA1c/Hb	Rheumatoid Factor
Apolipoprotein CII	CRP	IgA	Transthyretin (Prealbumin)
Apolipoprotein CIII	CRP Full Range (0.3-160mg/l)	IgE	Transferrin



RESEARCH

ANTIOXIDANTS:	Transferrin	Glucose/fructose	BIOTECHNOLOGY:
Albumin	Uric Acid	Lactic acid	Glutamate
Bilirubin		Malic acid	Glutamine
Ferritin	FOOD AND	NOPA	
Glutathione Reductase	WINE TESTING:	Potassium	SPECIALITY:
Ransel (Glutathione Peroxidase)	Acetic acid	TAS	Acid phosphatase
Ransod (Superoxide Dismutase)	Ammonia	Total SO ₂	
TIBC	Copper		
Total Antioxidant Status	Ethanol		

» THE RX SERIES A-Z TEST MENU



AUTOMATED

Acetaminophen	Ceruloplasmin	Glutathione Peroxidase (Ransel)	NEFA (Non-Esterified Fatty Acids)
Acetic Acid	Chloride (Non-Direct)	Glutathione Reductase	Opiates
Acid phosphatase	Cholesterol	Glycerol	Pancreatic Amylase
Adiponectin	Cholinesterase (Butyryl)	Haptoglobin	Phenobarbitol
Albumin	CK-MB	HbA1c/Hb	Phenytoin
Aldolase	CK-NAC	HDL3	Phosphorus
Alkaline Phosphatase	CO2 Total	HDL Cholesterol (Direct)	Potassium (Non-Direct)
Alpha-1 Acid Glycoprotein	Cocaine metabolite	Heart-Type Fatty Acid Binding Protein (H-FABP)	Rheumatoid Factor
Alpha-1 Antitrypsin	Complement Component 3	Homocysteine	Salicylate
ALT (GPT)	Complement Component 4	Hydroxybutyrate (Ranbut)	sLDL
Ammonia	Copper	IgA	Sodium (Non-Direct)
Amphetamines	Creatinine	IgE	Superoxide Dismutase (Ransod)
Amylase	CRP	IgG	Theophylline
Apolipoprotein A-I	CRP Full Range (0.3-160mg/l)	IgM	TIBC
Apolipoprotein All	CRP High Sensitivity	Iron	Total Antioxidant Status
Apolipoprotein B	Cystatin C	Lactate	Total Protein
Apolipoprotein CII	Digoxin	LAP	Transferrin
Apolipoprotein CIII	Ecstasy	LDH	Transthyretin (Prealbumin)
Apolipoprotein E	EDDP	LDL Cholesterol (Direct)	Triglycerides
ASO	Ethanol	Lipase	TxB Cardio
AST (GOT)	Ferritin	Lipoprotein (a)	Urea
Barbiturates	Fructosamine	Lithium	Uric Acid
Benzodiazepines	G6P-DH	L-Lactic Acid	Urinary Protein
Beta-2 Microglobulin	Gamma GT	Magnesium	Valproic Acid
Bile Acids	Gentamicin	Malic Acid	Zinc
Bilirubin (Direct & Total)	GLDH	Methadone	
Calcium	Glucose	Microalbumin	
Canine CRP	Glucose/Fructose	Myoglobin	
Cannabinoids	Glutamate		
Carbamazepine	Glutamine		



i m o l a

» SOFTWARE

The RX imola incorporates Windows® based software. This intuitive software is easy to navigate and results in minimal training requirements and enhanced productivity. The main screen links to a number of tabs including: Quality Control, Parameter, Calibration and Maintenance, allowing for simple access to information and straight forward selection of the operations required. Secure remote diagnostics saves money and time by allowing access to expert technical and applications staff anytime, anywhere. LIMS (Laboratory Information Management System) connectivity is easily achievable via ASTM standard.

The Run Monitor interface displays a table of test results with columns for Pos, PID, SID, Method, R1, S, M1, O1, R2, M2, O2, Result, CN, and Error. The table contains 23 rows of data for various test parameters.

Pos	PID	SID	Method	R1	S	M1	O1	R2	M2	O2	Result	CN	Error
16	R94001901011	BUTZPB	*	*	*	*	*	*	*	*	0.56	52	
16	R94001901011	BUTZPB	*	*	*	*	*	*	*	*	0.53	53	
17	R94001701011	BUTZPB	*	*	*	*	*	*	*	*	0.75	54	
17	R94001701011	BUTZPB	*	*	*	*	*	*	*	*	0.86	55	
17	R94001701011	BUTZPB	*	*	*	*	*	*	*	*	0.80	56	
18	R94001901011	BUTZPB	*	*	*	*	*	*	*	*	0.97	57	
18	R94001901011	BUTZPB	*	*	*	*	*	*	*	*	1.14	58	
18	R94001901011	BUTZPB	*	*	*	*	*	*	*	*	1.06	59	
19	R94001901011	BUTZPB	*	*	*	*	*	*	*	*	1.15	60	
19	R94001901011	BUTZPB	*	*	*	*	*	*	*	*	1.43	61	
19	R94001901011	BUTZPB	*	*	*	*	*	*	*	*	1.31	62	
20	R94002001011	BUTZPB	*	*	*	*	*	*	*	*	1.26	63	
20	R94002001011	BUTZPB	*	*	*	*	*	*	*	*	1.24	64	
20	R94002001011	BUTZPB	*	*	*	*	*	*	*	*	1.24	65	
21	R94002101011	BUTZPB	*	*	*	*	*	*	*	*	0.32	66	
21	R94002101011	BUTZPB	*	*	*	*	*	*	*	*	0.30	67	
21	R94002101011	BUTZPB	*	*	*	*	*	*	*	*	0.30	68	
22	R94002201011	BUTZPB	*	*	*	*	*	*	*	*	1.23	69	
22	R94002201011	BUTZPB	*	*	*	*	*	*	*	*	1.21	70	
22	R94002201011	BUTZPB	*	*	*	*	*	*	*	*	1.22	71	
23	R94002301011	BUTZPB	*	*	*	*	*	*	*	*	0.01	72	
23	R94002301011	BUTZPB	*	*	*	*	*	*	*	*	0.00	73	
23	R94002301011	BUTZPB	*	*	*	*	*	*	*	*	0.00	74	

REPORTS

The operator can search for previous reports and view real time results status, including time left until completion. The RX imola has a high capacity storage of up to 30,000 patient reports.

The Reagent Inventory interface displays a table of reagent stock levels with columns for Pos, Name, Type, Lot, Size, Vol.(mL), Tests, Method, Total, Valid, and Stability. The table contains 18 rows of data for various reagents.

Pos	Name	Type	Lot	Size	Vol.(mL)	Tests	Method	Total	Valid	Stability
01										
02										
03										
04										
05	DDL	R1	957	50mL	48.1	291	DDL	291	08/31/2017	7 AHQLB7800
06	GLUPAP	R1	439	50mL	45.8	235	GLUPAP	235	11/30/2017	7 ATC7B7804
07										
08	CREAT	R1	331	50mL	45.7	338	CREAT	338	04/30/2019	-6 AP97B9444
09										
10	TRIGS	R1	189	50mL	48.2	247	TRIGS	247	03/31/2019	-1 BMSB93204
11	CREAT	R2	332	50mL	24.9	338	CREAT	338	04/30/2019	-6 AP98C3400
12										
13										
14	DHDL	R1	923	50mL	48.0	355	DHDL	355	05/31/2017	-14 AGPIB7501
15	URIC	R1	255	50mL	42.6	258	UA	258	09/30/2017	-14 BO73B7906
16										
17	CAL 1S	R1	167	50mL	41.5	251	CAL 1S	251	07/31/2018	18 CE4NB8702
18	ALB	R1	115	50mL	39.4	167	ALB	167	05/31/2018	-8 A237B85047

REAGENT INVENTORY

Remaining reagent volume is automatically calculated on-board alongside the number of tests available and stability of the reagents. Should insufficient volume remain for any reagent, an alert will appear, allowing the operator to resolve the situation.

The Chemistry Parameters interface allows for setting up reagent parameters. It includes fields for Method1, Method2, Reagent Type, and Reagent Name. There are also buttons for 'Delete', 'Save', 'Cancel', and 'Print'.

CHEMISTRY PARAMETERS

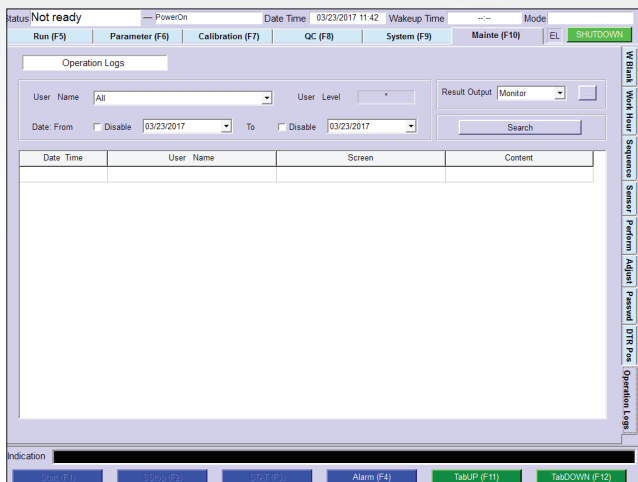
The chemistry parameters screen enables pre-sample dilution to be set up and re-running of assays as required. The user may set up to 20 different test profiles and define the order of analysis.

The Chemistry Parameters interface also includes a table for Normal Range settings. The table has columns for No., Range Name, Na-Min, Na-Max, K-Min, K-Max, Cl-Min, and Cl-Max. The table contains 6 rows of data for different test profiles.

No.	Range Name	Na-Min	Na-Max	K-Min	K-Max	Cl-Min	Cl-Max
1	Male-G1	0.0	0.0	0.00	0.00	0.0	0.0
2	Male-G2	0.0	0.0	0.00	0.00	0.0	0.0
3	Male-G3	0.0	0.0	0.00	0.00	0.0	0.0
4	Female-G1	0.0	0.0	0.00	0.00	0.0	0.0
5	Female-G2	0.0	0.0	0.00	0.00	0.0	0.0
6	Female-G3	0.0	0.0	0.00	0.00	0.0	0.0

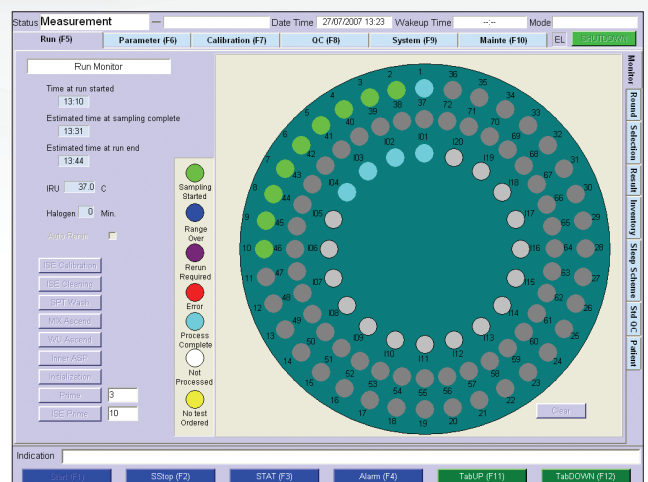
RESULTS

Results are easily retrievable via various search options, for example sample type, date or sample category etc. Laboratory staff can download and print results or transmit results to the LIMS system for all relevant clinicians to view.



MAINTENANCE

Maintenance on the RX imola is fast and effective. There are several simple steps to carry out daily, weekly and monthly. Less than 5 minutes daily maintenance is required.



RUN MONITOR

The run monitor displays full patient demographics. This screen indicates the number of tests and time left until completion. The operator may add emergency STAT samples from this screen.



QUALITY CONTROL

The QC screen generates Levey-Jennings charts and calibration curves allowing a visual performance assessment plus easy identification of QC errors and emerging trends. QC multi rules can be applied to ensure high error detection and minimal false rejection.



CALIBRATION

The software displays the current valid calibration for each assay installed, the reagent blank absorbance and the calibration check interval. There are 7 calibration models available: Factor, Linear, Point to point, Log-logit, Exponential, Spline & Spline 2.

» FEATURES AT A GLANCE



Versatile reagent carousel
with 60 cooled positions



Universal sample carousel with 72
positions for samples, plus a separate
cooled inner carousel for 20 controls
and calibrators



Liquid level sensor, crash,
bubble and clot detection



Unique loading hatch allows
emergency samples to be analysed
quickly and easily at any time



Low water consumption of
just 18 litres per hour



90 permanent Pyrex® cuvettes
with cuvette check function

» ORDERING & CUSTOMER SUPPORT

In choosing to purchase the RX imola from Randox you are partnering with a company that has over 35 years' experience in the IVD industry and clinical chemistry analyser placements in over 120 countries worldwide. Every customer's needs are different and Randox sales staff and distributor partners will work with your laboratory to create a bespoke package to suit your requirements. Randox Laboratories provide customers with an unrivalled technical support service.

ORDERING INFORMATION

RX imola analyser (comes with ISE as standard)

RX4900

For more information contact your local representative, or email us at:

theRXseries@randox.com



» SPECIFICATIONS

PHYSICAL DIMENSIONS

Height	690 mm, 27in
Depth	582 mm, 23in
Width	970 mm, 38in
Weight	150kg, 331lbs

PERFORMANCE CHARACTERISTICS

Throughput	400 photometric tests per hour, 240 ISE tests per hour
Analyser accreditation	CE marking in compliance with In Vitro Diagnostic Medical Device Directive 98/79/EC, FDA 510k cleared and UL certification
Analyser type	Compact fully automated random access bench top clinical analyser
Assay tests	Endpoint, kinetic, biochromatic, turbidmetric, sample blanking, reagent blanking and ISE
Maintenance	Daily maintenance-less than 5 minutes. No rear access required. Simple twice yearly preventative maintenance service.
Data management	Storage of up to 30,000 patient reports, search facility, test counter
Test channels	60 photometric channels, 3 direct ISE tests - sodium, potassium and chloride
Sleep mode	User defined sleep mode capabilities with automatic wash and instrument prep

REAGENT & SAMPLE SYSTEM

Reagent capacity	Removable tray with 60 cooled positions (30 positions for 100 or 50ml bottles and 30 positions for 20ml bottles)
Reagent cooling	8-15°C
Reagent identification	Automatic barcode reagent identification
Reagent inventory	Calculation of remaining reagent volume and tests available, alert for shortage, expired reagent and expired calibration
Reagent pipette	Dedicated twin reagent micropipette with liquid level sensor and crash detection, rinsed inside and outside with purified water
Sample addition	Immediate sampling interruption for addition of samples via removable panel
Sample capacity	Removable tray with 72 positions for samples, 20 cooled position for controls and calibrators
Sample dead volume	100µl in primary tubes. 50µl in paediatric cups
Sample dilution	Pre-dilution and automatic re-assay with diluted, reduced or increased sample volume. Dilution mixture 100-350µl consisting of 2-35µl of sample and 20-350µl of diluent
Sample identification	Barcode sample identification
Sample pipette	Dedicated sample micropipette with liquid level sensor, crash detection, bubble detection and 4 levels of clot detection. Rinsed inside and outside with purified water
Sample tube Size	Multiple primary tube sizes (diameter 13 to 16mm, height 75 to 100 mm), paediatric cups
Sample type	Serum, Plasma, Urine, CSF and supernatant

Sample volume	2 to 35µl (0.1 µl increments)
STAT sampling	Immediate STAT sampling interruption

REACTION SYSTEM

Minimum reaction volume	150µl
Stirring speed	Dual 5-speed rotating stirrers rinsed with purified water
Stirring system	Paddle type rotating stirrer cleaned with purified water
Temperature	37°C±0.3
Cuvettes	90 reusable Pyrex® cuvettes with 5-year lifespan, min volume 150µl, Max volume 450µl, 8-stage cuvette washing system
Cuvette size	8 (W) × 6.23 (D) × 30 (H)mm
Cycle time	9 seconds
Water consumption	18L per hour
Water requirements	NCCLS type 1 or 2 purified water supply at pressure [0.15-0.34Mpa]

OPTICAL SYSTEM

Detector method	Direct absorbance in cuvette (bichromatic and monochromatic)
Detection principal	12 wavelengths: 340, 380, 415, 450, 510, 546, 570, 600, 660, 700, 750 and 800 nm
ISE tests	Integrated ISE unit
Light source	Halogen tungsten lamp (air-cooled, 6 months service life)

CALIBRATION & QC

Quality control	Interactive Levey Jennings Charts, Daily, Monthly and Batch QC with data archiving, Automatic QC and Automatic calibration
Calibration principal	Factor; Linear; 2 point, point to point, spline, log-logit and exponential. Up to 7 calibrators per test

POWER & CONNECTIVITY

Input voltage	100 - 240Vac
Power consumption	<900 VA
UPS requirements	1230 W (analyser and PC)
LIMS connectivity	Bi-directional; ASTM standard (RS232 connection)

OPERATING SYSTEM

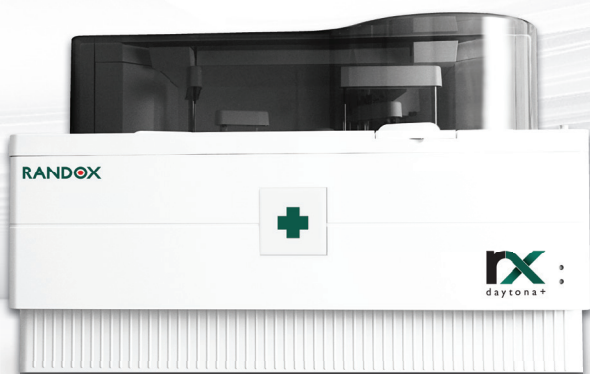
Operator interface	15" LCD display and printer externally connected. Windows® based user Interface 100-249 VAC, 1230 Watt approx
--------------------	---

» THE RX SERIES



A semi-automated clinical chemistry analyser with the ability to run flow cell or cuvette mode. The RX misano offers 9 wavelengths spanning 340-700nm as standard, with an optional 280nm. A large 7" touch screen monitor responsive even when wearing lab gloves allows the user to easily navigate through the testing screens of the analyser. USB port allows to import Randox-defined test menus and export patient, QC and calibration results

A fully automated, random access clinical chemistry analyser with 12 wavelengths between 340-800nm and a throughput of 170 tests per hour. Available as a benchtop or floor standing model with Windows® based software and STAT sampling as standard. The low throughput of the RX monaco provides small to mid-volume laboratories with cost effective analysis and high quality testing



A fully automated, random access, benchtop clinical chemistry analyser with a throughput of 270 photometric tests per hour, increasing to 450 with the optional ISE unit.

There are 12 wavelengths spanning 340-800nm and the RX daytona+ provides liquid level, clot and crash detection. Software is windows based and STAT sampling is available via an emergency loading port. The RX daytona+ offers superior performance for mid volume laboratories



A fully automated, random access, floor standing clinical chemistry analyser with a photometric throughput of 800 test per hour, increasing to 1200 including ISE. There are 13 wavelengths spanning 340-800nm and a fully automated onboard, haemolysis function for running HbA1c. Accurate results are supported by liquid level, clot, and crash detection.

The operating system utilises a modern touchscreen interface and Windows® icon based software

»» RANDOX - A GLOBAL DIAGNOSTIC SOLUTIONS PROVIDER

Randox has been supplying laboratories worldwide with revolutionary diagnostic solutions for over 35 years. Our experience and expertise allow us to create a leading product portfolio of high quality diagnostic tools which offer reliable and rapid diagnosis. We believe that by providing laboratories with the right tools, we can improve health care worldwide.

REAGENTS

Randox offers an extensive range of diagnostic reagents, giving biochemistry laboratories the opportunity to advance their routine and niche testing

The Randox reagents range goes beyond routine chemistries. At Randox we re-invest significantly in research and development to ensure we meet the ever changing needs of the laboratory. As a result, the esoteric reagents range from Randox is extensive and includes sLDL, Lipoprotein(a), H-FABP, Cystatin C, TxB Cardio, Adiponectin, Bile Acids, Copper, D-3-Hydroxybutyrate, G-6-PDH, Non-Esterified Fatty Acids, Total Antioxidant Status and Zinc.

Randox Reagents provide a number of benefits for the laboratory: Cost savings through excellent stability, automated methods and standards supplied with some kits; confidence in results with high performance methods, minimal interferences and wide measuring ranges; convenience and choice with applications for over 100 biochemistry analysers; liquid ready-to-use reagents, a wide range of kit sizes and complementary controls and calibrators.

ACUSERA

Randox is a world leading manufacturer of multi-analyte, true third party controls. Thousands of laboratories rely on us to accurately assess test system performance and ultimately empower them with the confidence required to release patient test results. With more than 390 analytes available across the Acusera range we can uniquely reduce the number of individual controls required while simultaneously reducing costs, time and storage space. A choice of formats are available, including liquid or lyophilised, ensuring flexibility and suitability for laboratories of all sizes and budgets.

Some of our principle products include Clinical Chemistry, Immunoassay, Urine, Immunology/Proteins, Cardiac Markers and Therapeutic Drugs among others. As a primary manufacturer, Randox are also able to offer the unique service of custom made controls.

RIQAS

Boasting over 45,000 participants and more than 360 parameters across 32 comprehensive & flexible EQA programmes, RIQAS is the largest international EQA scheme. Designed to cover all areas of clinical testing, each of our multi-analyte programmes benefit from a wide range of concentrations, frequent reporting, rapid feedback and informative yet user-friendly reports.

BIOCHIP ARRAY TECHNOLOGY

Biochip Array Technology (BAT) is an innovative assay technology for multi-analyte screening of biological samples in a rapid, accurate and easy to use format. BAT offers highly specific tests, coupled to highly sensitive chemiluminescent detection, providing quantitative results in easy to interpret reports. Randox BAT assays offer diagnostic, prognostic and predictive solutions across a variety of disease areas including sexually transmitted infection, cardiovascular disease (CVD), familial hypercholesterolemia (FH), colorectal cancer and respiratory infection.

Contact us for more information on any of our products and services:

Head Quarters

Randox Laboratories Ltd, 55 Diamond Road, Crumlin, County Antrim, BT29 4QY, United Kingdom

☎ +44 (0) 28 9442 2413 ✉ marketing@randox.com 🌐 randox.com/clinical-chemistry-analysers/

International Offices



AUSTRALIA

Randox (Australia) Pty Ltd.
Tel: +61 (0) 2 9615 4640



BRAZIL

Randox Brasil Ltda.
Tel: +55 11 5181-2024



CHINA

Randox Laboratories Ltd.
Tel: +86 021 6288 6240



CZECH REPUBLIC

Randox Laboratories S.R.O.
Tel: +420 2 1115 1661



FRANCE

Laboratoires Randox
Tel: +33 (0) 130 18 96 80



GERMANY

Randox Laboratories GmbH
Tel: +49 (0) 215 1937 0611



HONG KONG

Randox Laboratories Hong Kong Limited
Tel: +852 3595 0515



ITALY

Randox Laboratories Ltd.
Tel: +39 06 9896 8954



INDIA

Randox Laboratories India Pvt Ltd.
Tel: +91 80 2802 5000



POLAND

Randox Laboratories Polska Sp. z o.o.
Tel: +48 22 862 1080



PORTUGAL

Irladox Laboratorios Quimica Analitica Ltda
Tel: +351 22 589 8320



PUERTO RICO

Clinical Diagnostics of Puerto Rico, LLC
Tel: +1 787 701 7000



REPUBLIC OF IRELAND

Randox Teoranta
Tel: +353 7495 22600



SLOVAKIA

Randox S.R.O.
Tel: +421 2 6381 3324



SOUTH AFRICA

Randox Laboratories SA (Pty) Ltd.
Tel: +27 (0) 11 312 3590



SOUTH KOREA

Randox Korea
Tel: +82 (0) 31 478 3121



SPAIN

Laboratorios Randox S.L.
Tel: +34 93 475 09 64



SWITZERLAND

Randox Laboratories Ltd. (Switzerland)
Tel: +41 41 810 48 89



UAE

Randox Medical Equipments Trading LLC
Tel: +971 55 474 9075



USA

Randox Laboratories-US, Ltd.
Tel: +1 304 728 2890



VIETNAM

Randox Laboratories Ltd. Vietnam
Tel: +84 (0) 8 3911 0904

For technical support contact: technical.services@randox.com



Information correct at time of print. Randox Laboratories Ltd is a subsidiary of Randox Holdings Limited a company registered within Northern Ireland with company number NI. 614690. VAT Registered Number: GB 151 6827 08. Product availability may vary from country to country. Please contact your local Randox representative for information. Products may be for Research Use Only and not for use in diagnostic procedures in the USA.

LT133|JUL17