

H60S Hematology Analyzer

Specifications



Parameters

25 reportable parameters : WBC, Lym%, Mon%, Neu%, Bas%, Eos%, Lym#, Mon#, Neu#, Eos#, Bas#, RBC, HGB, HCT, MCV, MCH, MCHC, RDW-CV, RDW-SD, PLT, MPV, PDW, PCT, P-LCR, P-LCC

6 research parameters include LIC%, LIC#, ALY%, ALY#, NLR, PLR

2 histograms for RBC and PLT

2 scattergrams for DIFF and BASO

| Performance | Parameter | Linearity Range | Precision (CV%) |
|-------------|---------------------------|-----------------|---|
| | WBC (10 ⁹ /L) | 0.0-500 | ≤ 3.0% (3.50 - 7.00) ≤ 2.5% (7.01 - 15.00) |
| | RBC (10 ¹² /L) | 0.0-8.5 | ≤ 1.5% |
| | HGB (g/L) | 0-250 | ≤ 1.5% |
| | PLT (10 ⁹ /L) | 0-4000 | ≤ 5.0% |

Principles

Semiconductor laser flow cytometry analysis for WBC, DIFF and BASO counting
Electrical impedance for RBC, PLT counting
Cyanide-free reagent for HGB with colorimetric method

Sample Volume

| | |
|----------------------------|------|
| Whole blood mode | 16µL |
| Capillary whole blood mode | 16µL |
| Pre-diluted mode | 20µL |

Reagent

HD610 Diluent 20L
HL610 Lyse 500mL/1L
HC310 Cleaner 50mL

Operating Environment

Temperature : 15°C - 32°C
Humidity : 30% RH~85% RH;
Air pressure : 70kPa~106 kPa

Throughput

60 samples per hour

Interface

12" inch colour touch screen

Control and Calibrator

ED-60D, ED-CAL PLUS

Data Storage Capacity

100,000 results including results and histograms
12QC files (100 data per file)

Dimension and Weight

626.5(D)x565(W)x580(H)
Weight : 42kg



A world of potential



H60S

Hematology Analyzer

About Edan

Edan is a healthcare company dedicated to improving the human condition around the world by delivering value-driven, innovative and high-quality medical products and services. For over 20 years, Edan has been pioneering a comprehensive line of medical solutions that address a broad range of healthcare practices including:

- Diagnostic ECG
- Patient Monitoring
- OB/GYN
- Ultrasound Imaging
- Point-of-Care Testing
- *In-Vitro* Diagnostics
- Veterinary

Healthcare professionals around the world depend on Edan's breakthrough medical technologies and outstanding customer support.



ENG-IVD-H60S V1.0-20210825

Marketed by

ACME
MEDITECH PVT. LTD.

50-92-28, Ground Floor, Santhi Puram,
Visakhapatnam - 530016. A.P.

T : +91 99662 96308 & 99851 23313

E : info@acmemeditech.in

W: www.acmemeditech.in

Deliver reliable results
with maximum uptime

ELEGANT DESIGN AS USUAL

At Edan, we are a new player in the IVD field, while we are well known around the world for the excellence of our medical products. We are a successor in hematology, whereas we are not a follower. We are, as USUAL, to provide professional service and trustable performance to reshape your experience.

We are on a journey to understand your needs, solve your challenges and provide a better solution. Our fundamental goal is to make sure our products truly meet your needs without generating an extra burden. And this is about design.

A good design includes everything, which influences the entire user experience. Our answer is Elegant Design as USUAL.

Within our Elegant Design concept, we are emphasizing five tenets to enhance your experience

USER | **SPACE** | **OUTLINE** | **SERIAL** | **LIFESPAN**



USER

Design with user-oriented

SPACE

Design to suit your surroundings

OUTLINE

Design to simplify your operation

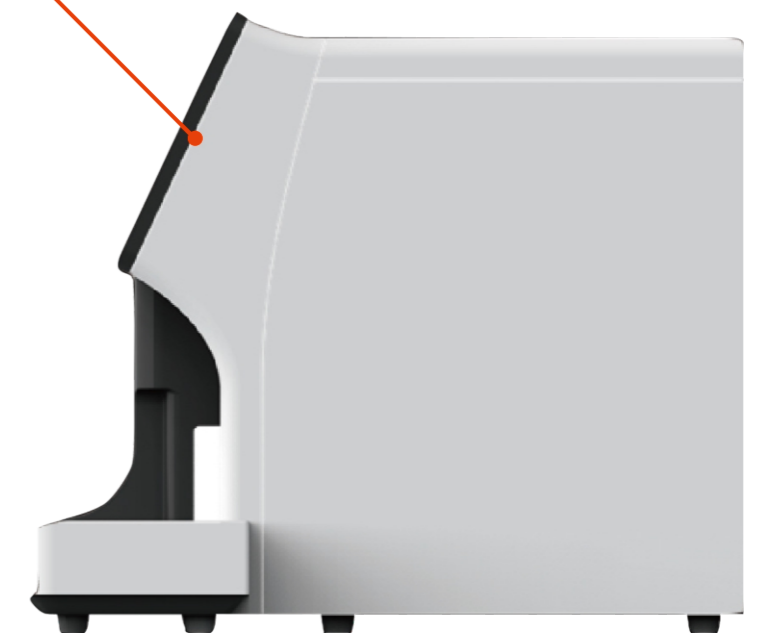
SERIAL

Different model tailored to your needs

LIFESPAN

Design for long product life

12° degree angle



H60 SERIES : BRIGHTEN YOUR HEMATOLOGY LIGHTEN YOUR WORK

People who work in the laboratory deserve great respect and attention. It's a challenging job with a high workload and fast response. Every day, with patients and physicians counting on you, you have no space for error and hardly have time to breathe, so you have to be focused at all times. Having the right instrument is the ultimate solution.

We invent the requirements and explore the pain points to develop a new concept in hematology. The hematology approach has been in the market for decades, but many challenges haven't been tackled. Adapted to the fundamental but significant appeal points, the Edan H60 series can well suit your needs.

The Edan H60 series are positioned in low to moderate volume laboratories, committed to lightening your work with an enjoyable experience. Equipped with an integrated, intuitive operation system, it brings a reliable system with clinical values and effective cost control. The Edan H60 series is tailored to you.

FREE YOU WITH MAXIMUM UPTIME

DETAILS THAT LIGHTEN YOUR WORK

Automatic rotation and recognition of sample ID



12"-inch colorful touch screen

Reagent management via RFID card secure your reagent business



60 samples capacity autoloader with continuous loading

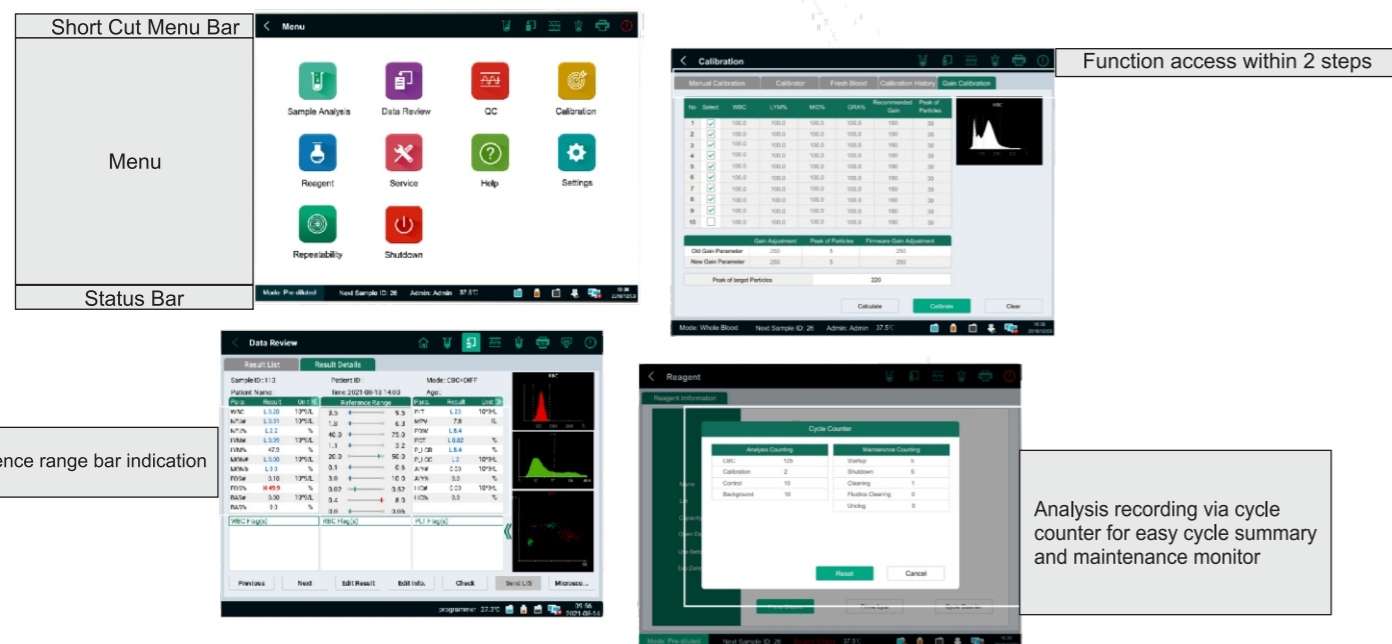


STAT position Easy switch from autoloader loader



Various tube supported
Incorrect mode selection prompt
• Vacuum tube
• 1.5mL micro tube
• 0.5mL micro tube

INTUITIVE SYSTEM THAT SIMPLIFIES YOUR HANDLING



The system that stands out

The H60S features a whole set of user-oriented functions that are hard to find elsewhere. Its android-based system has a similar experience as a smartphone - pleasure-to-operate and easy-to-use. You can get to any functionality within two steps. This 12-inch colorful touch screen makes working with H60S and viewing its results exceptionally straightforward.

Outstanding graphic interface

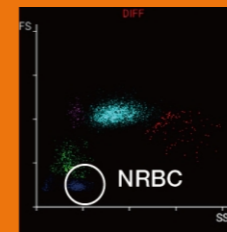
The user interface is undoubtedly the most visible and best-appreciated feature of the H60 series. Different set-up views, each optimized for various user situations, facilitate routine use. The most common include a sample view showing classic graphs and all parameters within one page. The other sample view features the most practical reference bar display that indicates the results status. The comprehensive information on the short-cut menu bar and status bar give you fast access to any primary function.

Communicate and print like never before

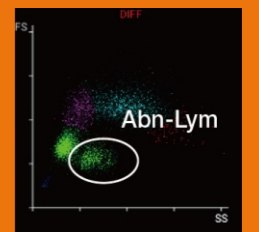
An integrated workstation with the HIS and LIS connections further streamlines analysis and reporting. Standardized HL7 protocol and storage capacity extends up to 100,000 easily accessible sample files. The print function has the most flexible options that allow you to print individual sample results and control tests. L-J graphs, or QC lists with any parameters selection.

SENSITIVE FLAGGINGS THAT ASSIST YOUR INSIGHTS

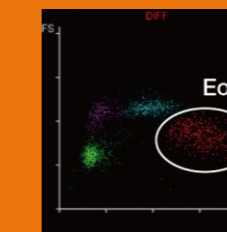
NRBC
NRBC PRESENCE FLAGGING
REMINDED TO CORRECT WHITE BLOOD CELL COUNTS BY SMEAR



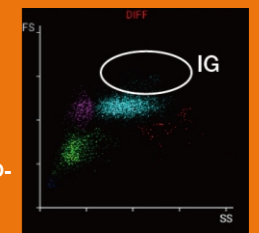
ALY
ABNORMAL LYMPHOCYTE FLAGGING
SUSPICIOUS OF VARIANT LYMPHOCYTES AND MALIGNANT LYMPHOCYTES



EOSINOPHILIA
HIGH SPECIFICITY ON EOSINOPHIL
GREAT DIFFERENTIATION ON EOSINOPHILIA SAMPLES



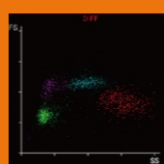
IG
IG PRESENCE FLAGGING
ASSESSMENT OF SEPSIS AND INFLAMMATION
COMPRISED OF METAMYELOCYTES, MYELOCYTES & PROMYELOCYTES



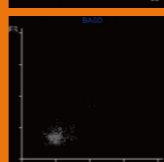
DIFF
10 DIFF PARAMETERS

HIGH CLUSTERING OF 5-DIFF

TWO 2D SCATTERGRAMS
HIGH SENSITIVITY FLAGGING



DIFF



BASO

